



# Virginia

FORWARD VIRGINIA BLUEPRINT

# We are all in this together

- Virginians are doing the right thing.

Staying home. Wearing face coverings. Social distancing.  
Slowing the spread.

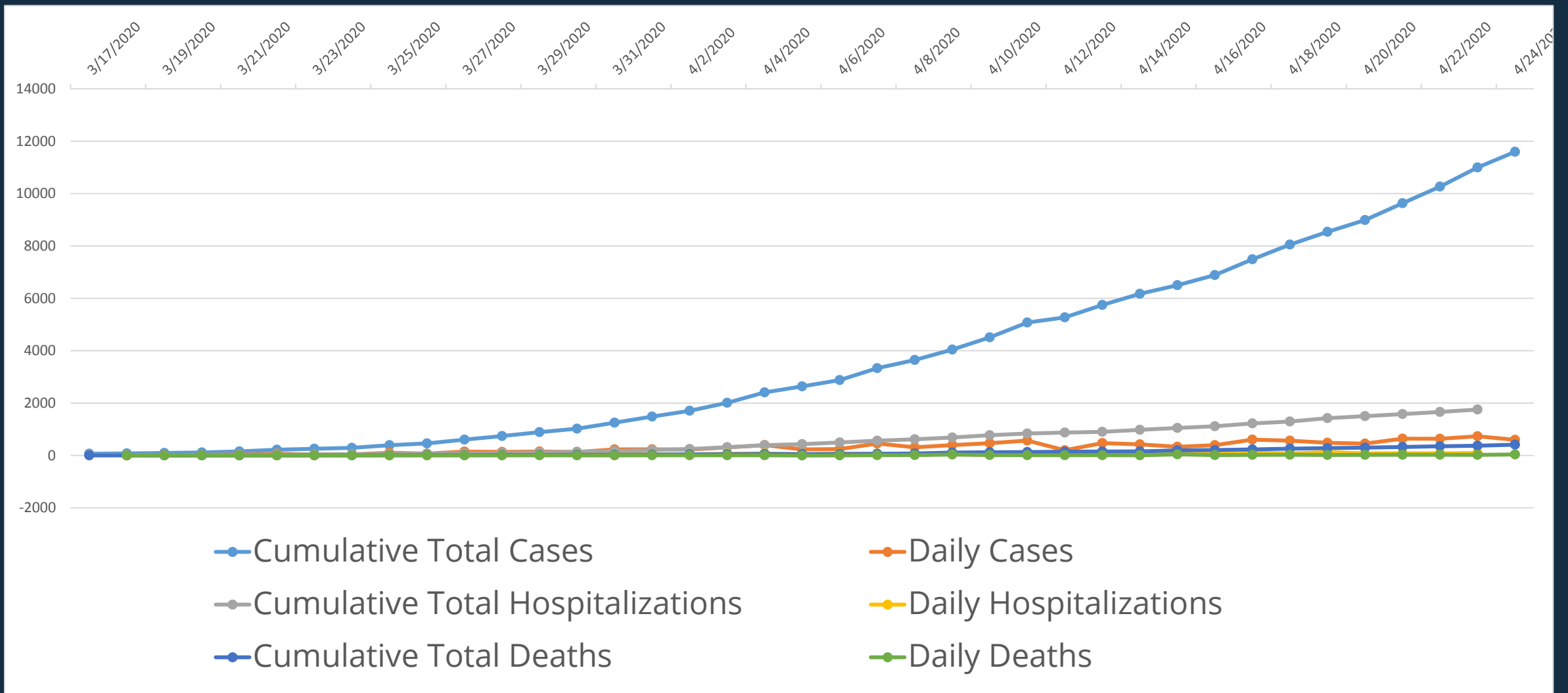
- The Commonwealth is taking aggressive action.

Closing schools. Limiting gatherings. Stay-home orders.

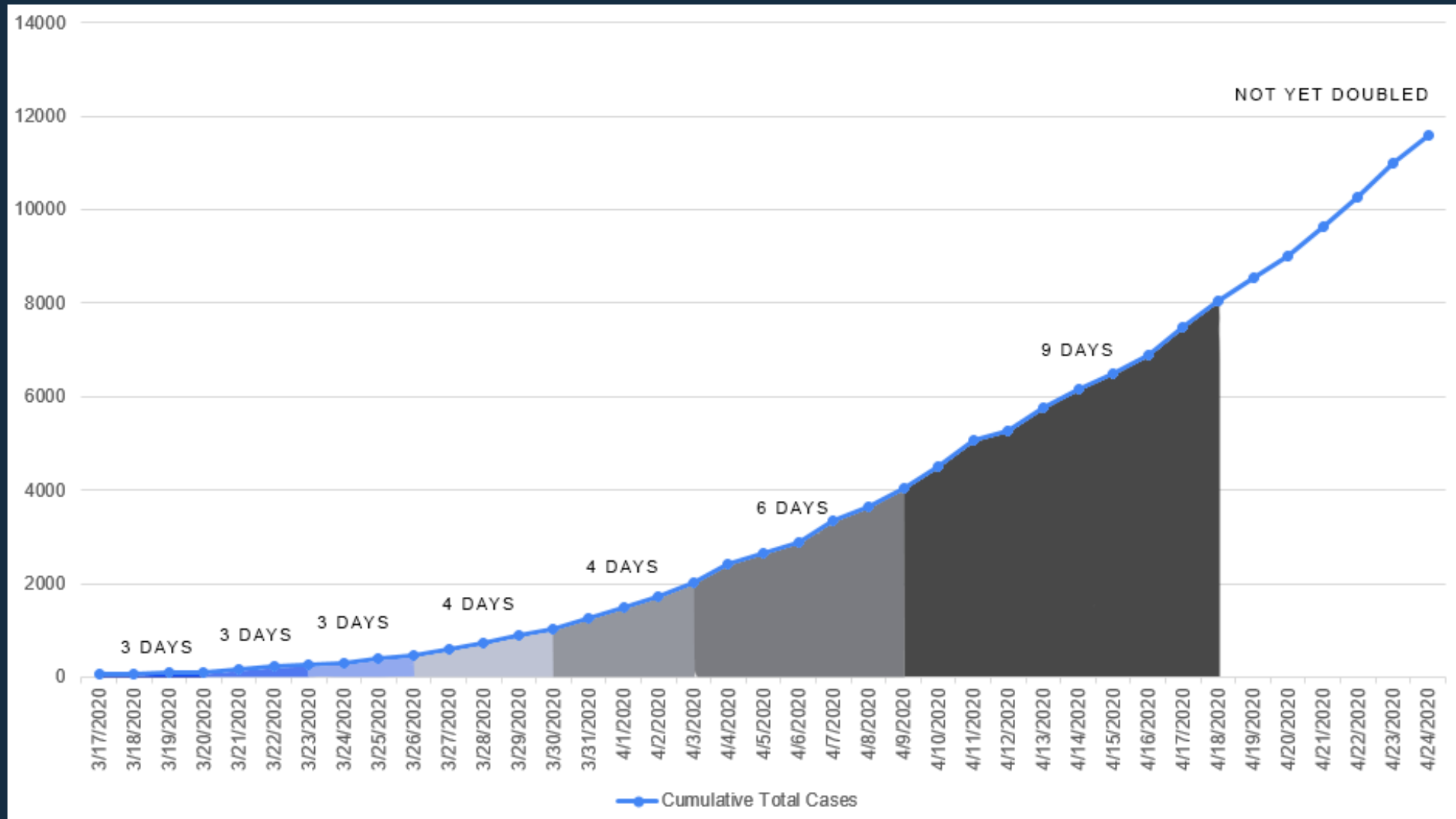
- Our hard work is delivering results.



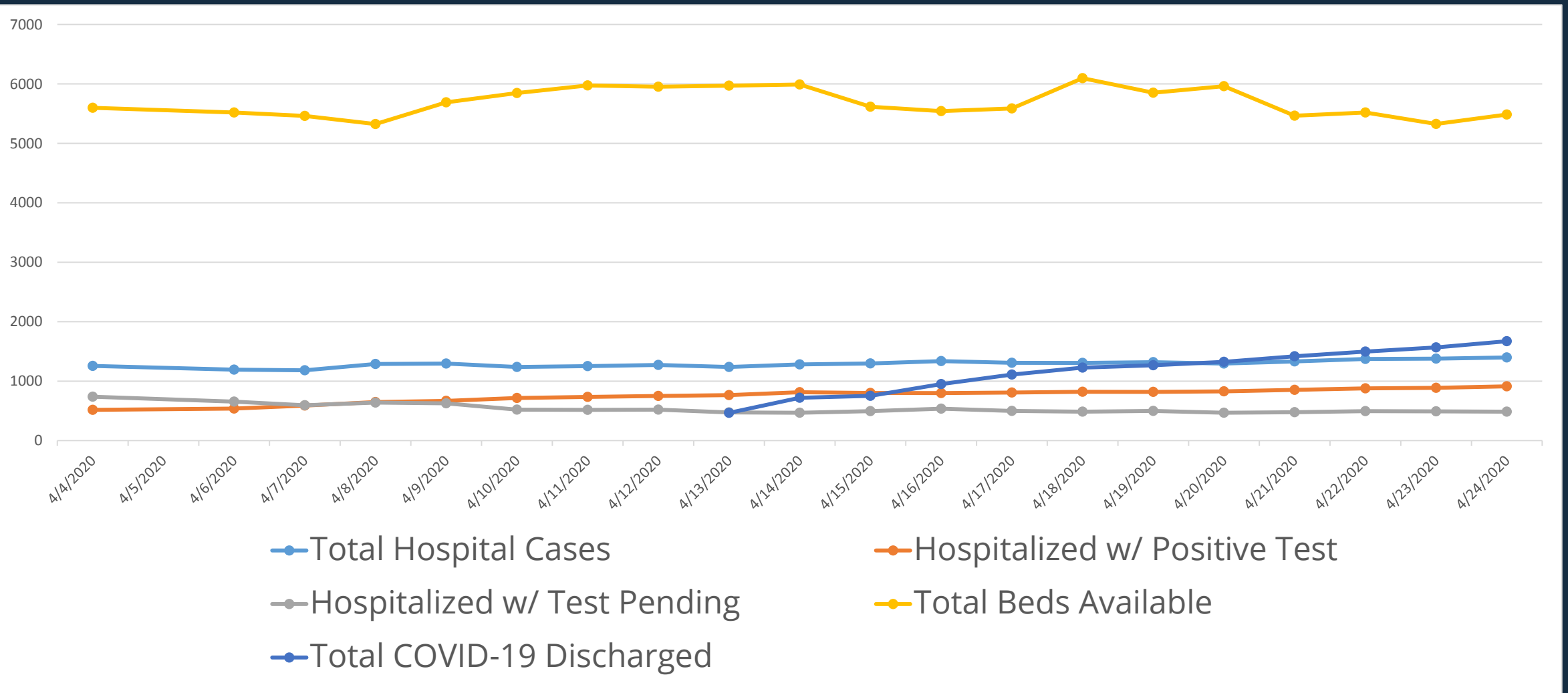
# But daily cases are still rising



# Growth rates are slowing

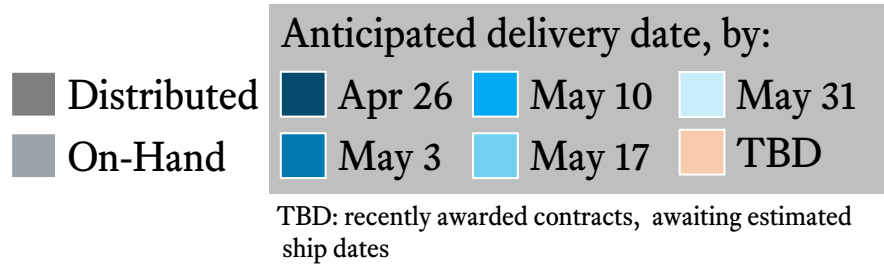


# Hospitalization rates remain flat



# PPE in Virginia

## Expected deliveries by week, # of units



## Supply Highlights

Arriving April 24:

- 3M gloves
- 100,000 N95 /KN95 Masks
- 500,000 Surgical Masks
- 40,000 Isolation Gowns

Scheduled for delivery April 27:

- 800,000 gloves
- 300,000 Surgical masks

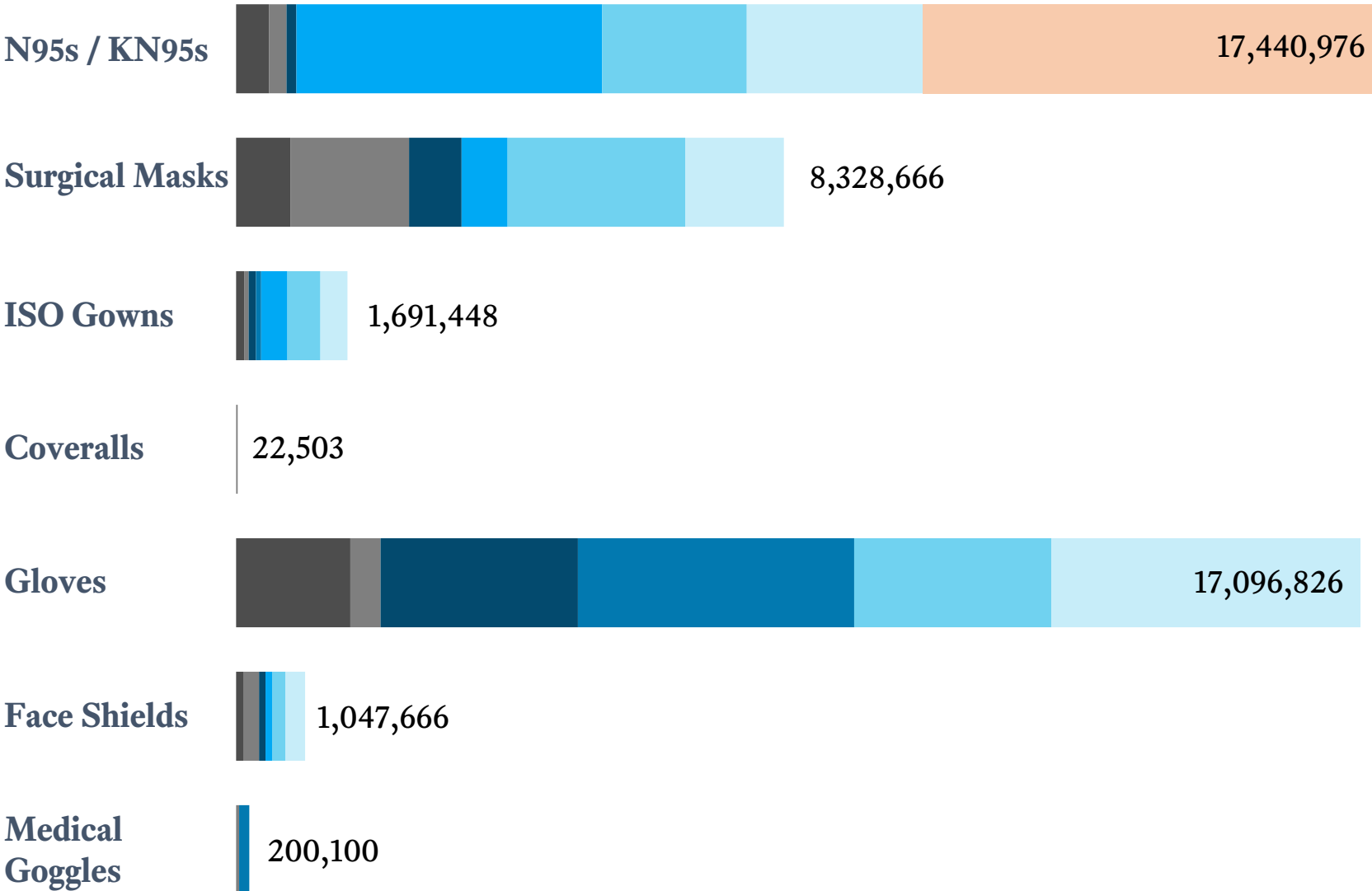
Awarded two PPE Contracts this week:

- Buy w/ DC/MD: 5M N95 Masks, \$7.8M (3M masks)
- DollarTree: 2M KN95 Masks, \$3.256M

## Distribution

Packaged 122 locality orders for shipping this week:

- Gloves: 90.4k
- Gowns: 9450
- Surgical Masks: 205.3k
- N95 Masks: 50.6k
- Coveralls: 550
- Sanitizer: 268



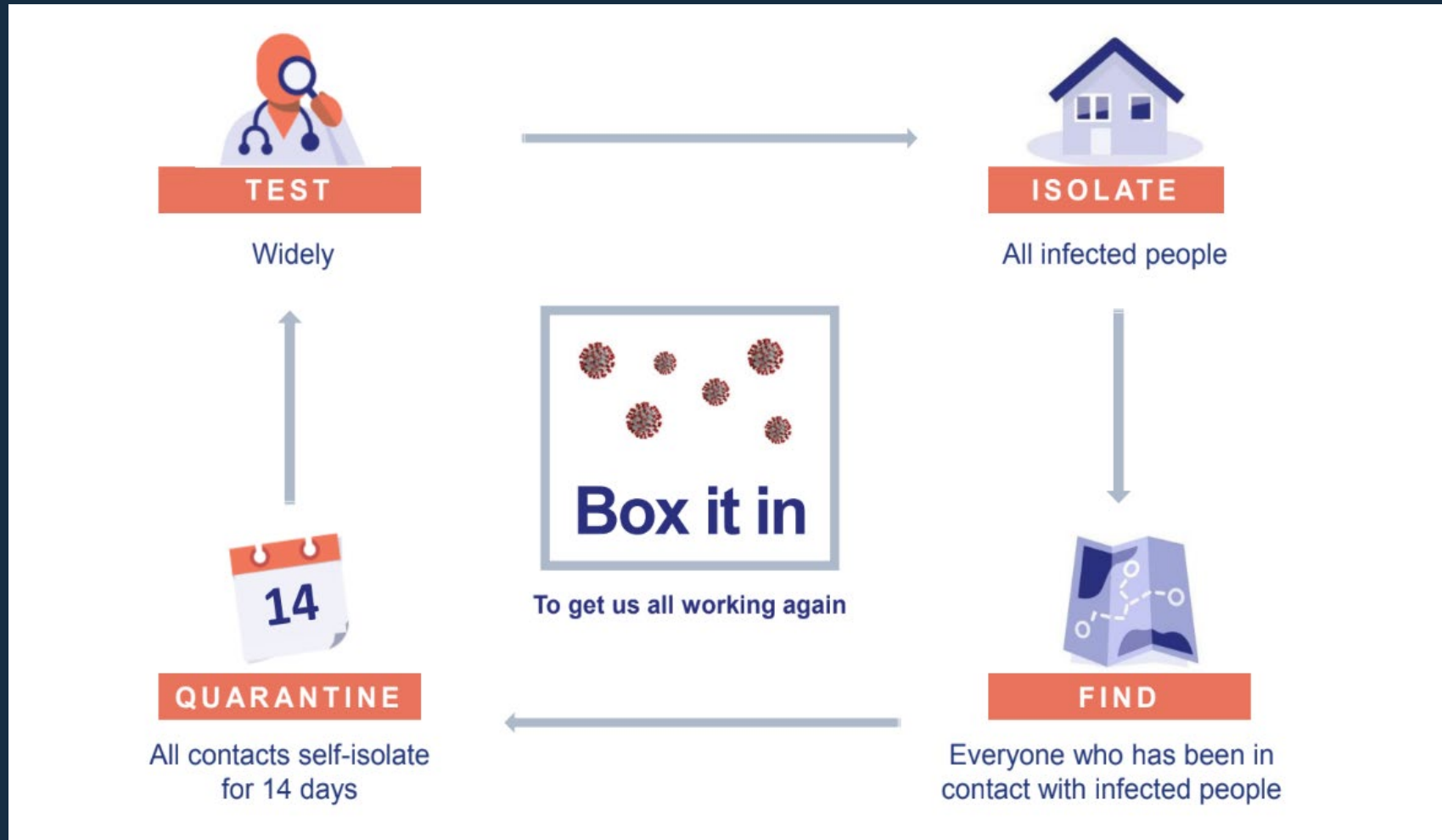
# Virginia needs to keep doing what we're doing and plan for the next phase

## VIRGINIA'S METRICS FOR PHASE ONE:

- ✓ Moving downward: Percentage of positive tests over 14 days
- ✓ Moving downward: Hospitalizations over 14 days
- ✓ Enough hospital beds & intensive care capacity
- ✓ Increasing & sustainable supply of PPE



# This is how we get back to work





# Testing Virginia

Current  
tests per day:  
**2,600**

Predicted  
tests per day:  
**5,000**

Predicted  
tests per day:  
**7,500**

Predicted  
tests per day:  
**10,000**

Predicted  
tests per day:  
**2,000**

**1**

**2**

**3**

**4**

**5**

High risk,  
symptomatic  
individuals and  
outbreaks

Expansion. Strike  
Teams. National  
Guard

Community testing.  
Commercial labs

Large-scale testing  
as economy opens

Steady state.  
Ongoing  
monitoring.

# When we see...

- Downward trend: Percentage of positive tests over 14 days
- Downward trend: Hospitalizations over 14 days
- Increased testing and tracing
- Enough hospital beds & intensive care capacity
- Increasing & sustainable supply of PPE

...then Virginia can move to phase one.

# Phase one looks like this:

- Some businesses re-open with strict safety restrictions
- Continued social distancing
- Continued teleworking
- Face coverings recommended in public

